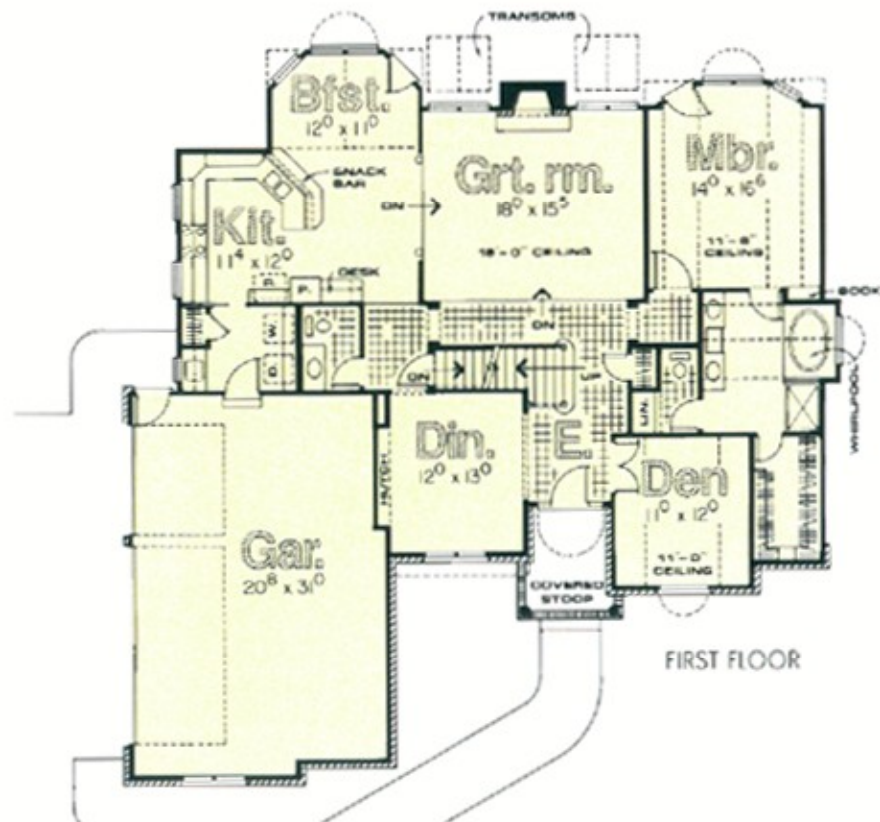


# Pinnacle

- Dramatic rooflines, brick detailing and columned entry highlight this 1½ story
- 9'-0" main level walls
- Entry views formal dining and den with French doors, volume ceiling and arched transom
- Step down into great room with 2-story ceiling and fireplace flanked by windows
- Arched transom window and sloped ceiling accentuate breakfast area
- Peninsula kitchen provides snack bar, desk and pantry
- Volume ceiling, built-in bookcase and bayed window are amenities of master bedroom
- Master bath presents cathedral ceiling, dual lavs, oval whirlpool and walk-in closet
- Spacious bath arrangement serves secondary bedrooms



REAR ELEVATION



FIRST FLOOR



SECOND FLOOR

**MODEL NO. 3284-40R**

**1-1/2 STORY**

**4 Bedrooms + Den ♦ 2½ Baths**

Length .....58'-0"

Depth .....59'-4"

First Floor .....1,777 sq. ft.

Second Floor .....719 sq. ft.

Total Area .....2,496 sq. ft.