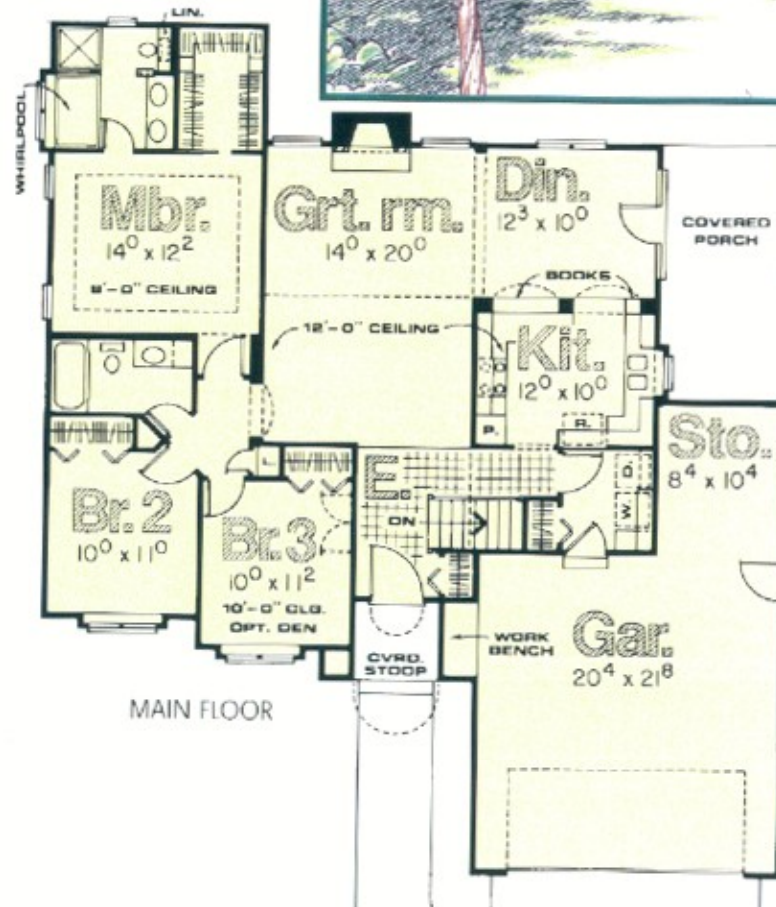


Quimby

- Small ranch home makes grand statement with prominent entry
- 12-foot-tall ceiling integrates great room, semi-formal dining room and kitchen
- Arched openings to kitchen with built-in bookcases provide dramatic backdrop for dining area
- Efficient kitchen features 2 lazy Susans, plant shelf above upper cabinets and an airy window
- Hall bath serves secondary bed rooms, with bedroom #3 easily optioned to a den
- Master suite features a boxed 9' high ceiling, whirlpool bath and walk-in closet
- Space for work bench and sizeable storage area in garage



REAR ELEVATION



MAIN FLOOR

Custom Homes
 built by:  Hoffrogge
 Development Co.

MODEL NO. 3010-40R

1 STORY

3 Bedrooms ♦ 2 Baths

Length50'-0"

Depth58'-0"

Total Area1,422 sq. ft.