

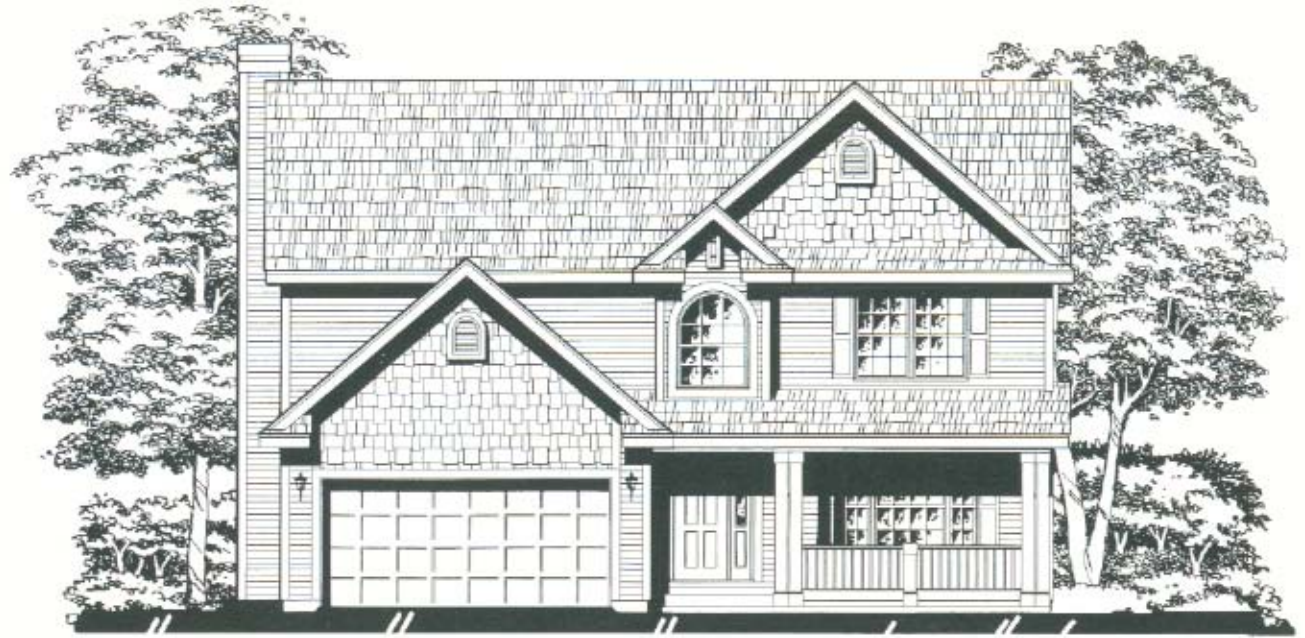
Hanover

Model 387

Two Story

- ◆ 3 Bedrooms
- ◆ 2½ Baths
- ◆ 2-Car Attached Garage

Custom Homes
built
by:  Hoffrogge
Development Co.
General Contractor
Lic #9327967



Elevation A



Elevation B

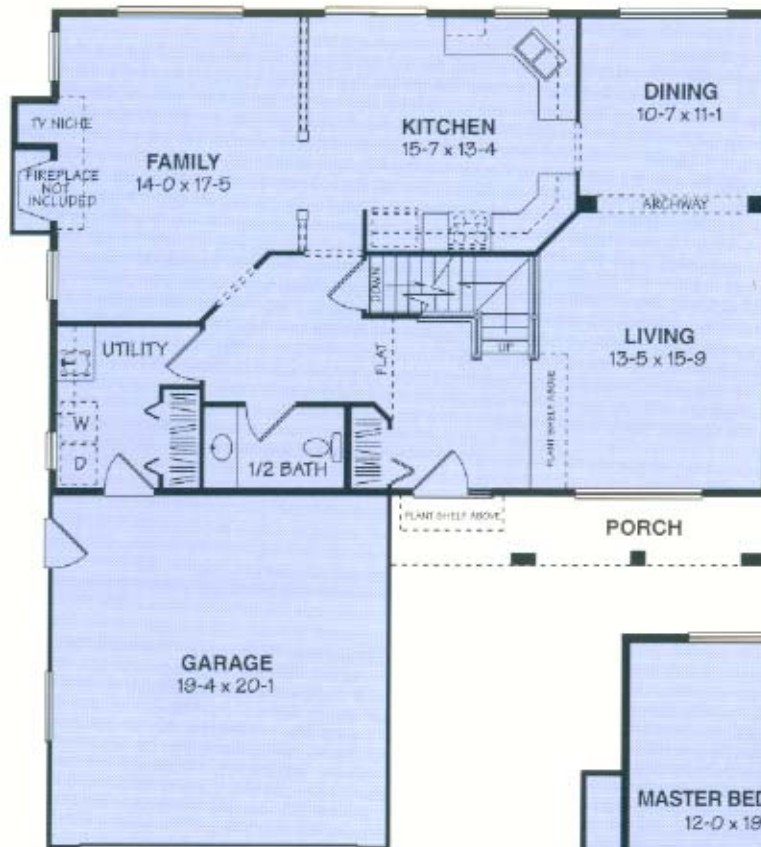
Hamover

◆ Model No. 387

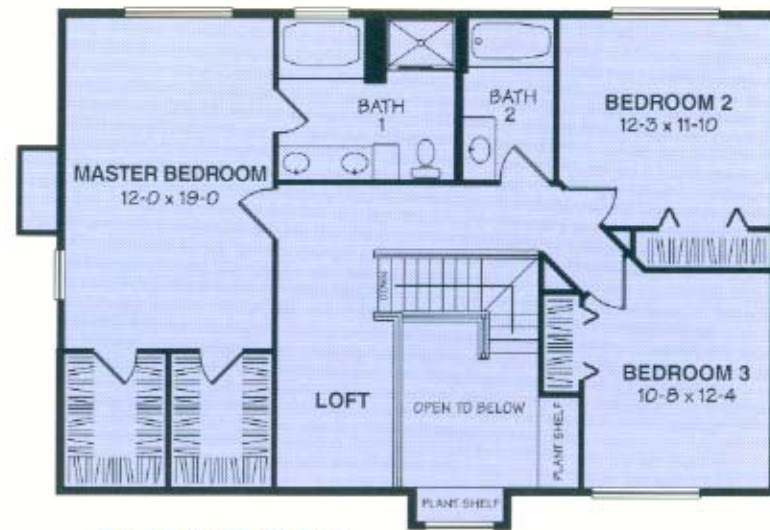
Width42'-0"
 Depth48'-6"
 Main Floor.....1,176 sq. ft.
 Upper Floor.....1,048 sq. ft.
 Total2,224 sq. ft.

This generously designed home is meant for family living! Enter the grand entry area that opens to the dramatic open ceiling. Enjoy the large living areas and rooms throughout. This is a home your family will appreciate year after year!

Add these options to make it your very own! 3-car garage, stone or brick exterior accents, spacious front porch, fireplace.



Standard Floor Plan
Main Floor



Standard Floor Plan
Upper Floor

